

**CERTIFIED LAND CORNER RECORDATION**

**DESCRIPTION OF CORNER EVIDENCE FOUND, AND ORIGINAL RECORD (if known)**

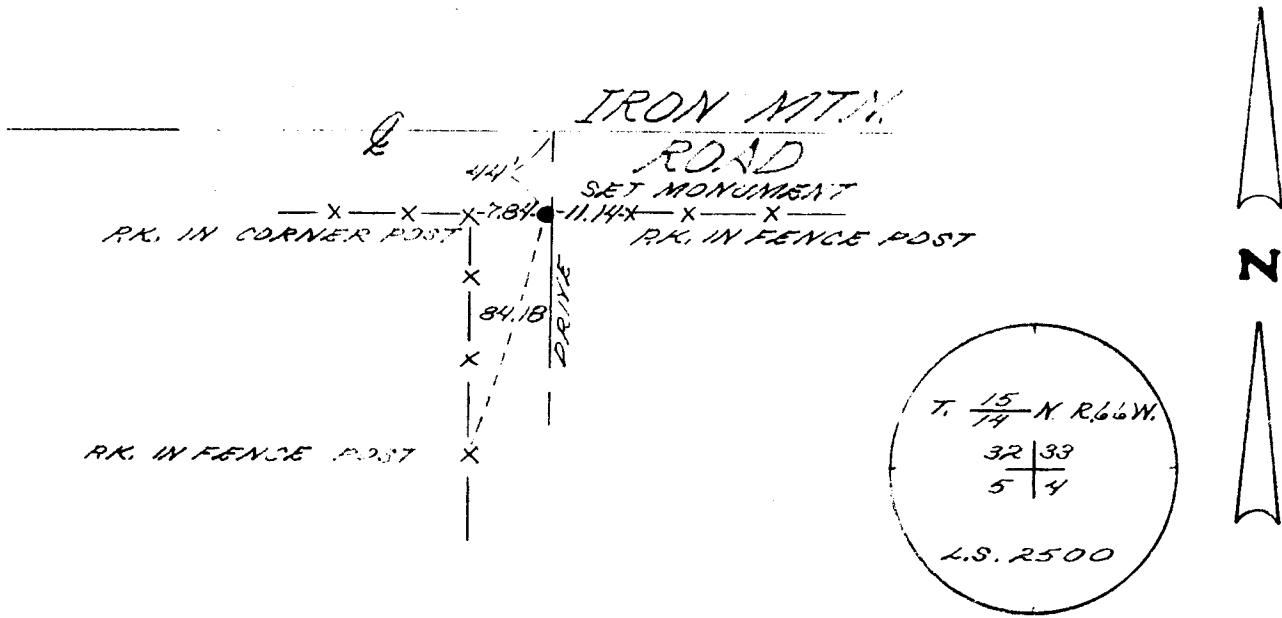
T. 15 N.  
 32 | 33  
 5 | 4  
 14 N. R. 66 W.

FOUND: NO EVIDENCE OF PREVIOUS MONUMENTATION  
 SET 1" 5/8" x 18" LONG REBAR 0.2' BELOW SURFACE W/  
 2" ALUMINUM CAP MARKED AS SHOWN BELOW  
 FROM TIES SHOWN ON PREVIOUSLY RECORDED LAND  
 RECORDATION FORM DATED 2/15/80

**DESCRIPTION OF MONUMENT AND ACCESSORIES ESTABLISHED  
 TO PERPETUATE THE ORIGINAL LOCATION OF THIS CORNER:**

SEE TIES BELOW

**SKETCH, WITH COURSE AND DISTANCE TO ADJACENT CORNER IF DETERMINED IN THIS SURVEY.  
 (May Sketch or Paste Reproduction on Reverse Side.)**



I, JOHN A STEIL certify that I have carefully performed or reviewed the work done on the diagrammed corner as reported on this recordation form and approve the same.

*John A. Steil*  
 Signature of Surveyor L.S. 2500  
 Registration No.

STATE OF WYOMING,  
 Office of Clerk and Recorder,  
 County of Sarassee

740799

This "corner record" was filed for record on the \_\_\_\_\_ day of APR 12 1984, 19\_\_\_\_, was noted on the cross-index plat and is assigned page No. \_\_\_\_\_, in book No. \_\_\_\_\_.

County Official			
Cross Index No. <u>2-9</u>	T. <u>15 N.</u>	R. <u>66 W.</u>	Mer. <u>6 14</u>
<u>4-9</u>	T. <u>14 N.</u>	R. <u>66 W.</u>	Mer. <u>6 14</u>
_____	T. _____	R. _____	Mer. _____
_____	T. _____	R. _____	Mer. _____
_____	T. _____	R. _____	Mer. _____
_____	T. _____	R. _____	Mer. _____
_____	T. _____	R. _____	Mer. _____

A-93 14-66